



## KETOS 48 SS

*by Rossinavi / Rossi Group with Arrabito Naval Architects and Team for Design – by Enrico Gobbi*

Since its foundation in the 1970s, Rossinavi has progressively built up its experience in metal shipbuilding so that after more than 30 years in the business, the Italian shipyard enjoys an important position in the international luxury yachting market. Today, Rossinavi has a high level of technical specialisation in the exclusive custom build sector, with three production sites in Tuscany. These facilities, covering a total area of more than 15,000 m<sup>2</sup>, allow Rossinavi to carry out new builds as well as refurbishments and conversions of magnificent leisure vessels with total lengths of up to 70 metres / 230 feet or more. Last year at the prestigious Monaco Yacht Show, Rossinavi presented its new 49-metre

yacht Polaris, a semi-displacement vessel with hull and superstructure in light aluminium alloy. The yacht was very popular with a public that particularly appreciated her excellent qualities. This level of success is certain to be repeated with Rossinavi's other forthcoming creations, currently in the advanced phases of construction. These include a gentleman's motor yacht in a classic vintage style, bearing yard number FR 029: a displacement vessel 39 metres / 127 feet in length, with a high-strength steel hull and a light aluminium alloy superstructure. Then there is a motor yacht in a contemporary style, bearing yard number FR 030: a displacement vessel 48.50 metres / 159 feet in length, ➤

CONCEPT





## KETOS 48 SS

again with a high-strength steel hull and a light aluminium alloy superstructure. Alongside these vessels now under construction, numerous designs are also being developed for future construction at Rossinavi. These are divided into two main ranges: designs for displacement vessels and designs for semi-displacement vessels. The displacement vessels include the Spadolini Design 61 series, a timeless motor yacht in a modern style with a length of 61 metres / 201 feet, a steel hull and an aluminium superstructure; the Spadolini Design 55 series, a timeless yet modern motor yacht with a length of 55 metres / 180 feet, a steel hull and aluminium superstructure; the Poseidon 44 series, an explorer-vessel-type motor yacht with a length of 43.85 metres / 144 feet, a steel hull and an aluminium superstructure; and the Bahamas 48 series, a contemporary style low-draught motor yacht with a length of 48.10 metres / 158 feet and an aluminium

hull and superstructure. For their part, the semi-displacement vessels include the Spadolini Design 62 series, a contemporary motor yacht with a length of 62 metres / 204 feet and an aluminium hull and superstructure; and the Palladium 48 series, an expedition-vessel-type motor yacht with a length of 47.10 metres / 154 feet and an aluminium hull and superstructure. Finally, the fantastic Ketos series merits individual consideration. It is so unusual that the design is available as a displacement hull, a semi-displacement hull and even a planing hull! To date, then, the Ketos range comprises three different models, all with an aluminium hull and superstructure: the Ketos 53 displacement model with a length of 53 metres / 174 feet, the Ketos 53 semi-displacement model with a length of 53 metres / 174 feet and the Ketos 48 SS planing model, with a length of 48 metres / 157 feet. ➤



## KETOS 48 SS

This last, in turn, is available in two different variants on request, the Open Sport with an open flybridge deck and the Hard Top Sport with a covered flybridge deck. In terms of engine power, the Ketos 48 SS model also offers clients the choice between two different options, both capable of powering the yacht to a top speed of 30-36 knots in both engine configurations as well as maintaining a cruising speed of 25 knots. The first option consists of two MTU 12V 4000 M93 L engines, each with maximum power of 3,500 HP, coupled to a five-blade propeller propulsion system. The second option comprises three MTU 16V 2000 M94 engines, each with maximum power of 2,600 HP, coupled to a propulsion system using Rolls-Royce KaMeWa hydrojets. With international gross tonnage below 500 GT, Ketos 48 SS is based on naval architecture by Arrabito Naval Architects and all her grit and sportiness are expressed through a captivating exterior design developed by Enrico Gobbi of Team for Design. Although the lines of the hull and superstructure are extremely sleek, this utterly modern two and a half deck motor yacht with a raised pilothouse has exterior and interior spaces entirely comparable with those of a three deck motor yacht of a similar or greater size. This has been achieved thanks to skilled, careful design work which, while maximising the aesthetic dynamism of the vessel, simultaneously makes full use of the available space on board through rational exploitation of the volume and functional optimisation of the interior and exterior areas. A perfect example to demonstrate the abundance of space on board is provided by the huge Owner's suite, which has an available surface area of more than 60 m<sup>2</sup>, or more than 650 square feet. The layout of Ketos 48 SS is emphasised by the light, contemporary style of the interior design created by Enrico Gobbi of Team for Design, and is characterised by versatile solutions to make the vessel fully adaptable to any requirement the Owner may have. Options for the flybridge deck alongside the external helm station can be chosen from among numerous possible functional areas: bar & barbecue area, whirlpool area, sun pad and sun bed areas, and lounge or dining areas. On the main deck, outside there is a lounge area and a sun bed area in the forward section, while the aft section features a sun bed area and a lounge area together with an alfresco dining area and a bar area.

Inside, the salon features a living area and a dining area, with a pantry, a galley, a lobby and a day head alongside it. On the lower deck, the Owner's suite is located forward, featuring a private study/office, a walk-in wardrobe and a private gym, as well as the master stateroom with its relaxation space, conversation space and his and hers bathrooms. The crew quarters are amidships, with a crew mess, boat laundry, captain's cabin with desk, wardrobe and private bathroom, and three crew cabins, each with a wardrobe and private bathroom. The private guest accommodation is located to aft: two guest staterooms, each with twin beds, a wardrobe and an en suite bathroom, and a further two guest staterooms each with a double bed, desk, wardrobe and en suite bathroom. Finally, the stern holds the tender garage and engine room, as well as a separate garage for the water toys.

*Jacob Herzog*



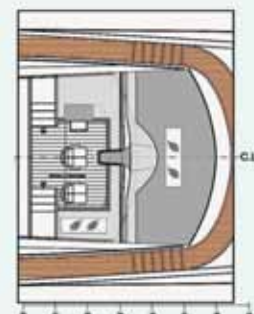




Profile



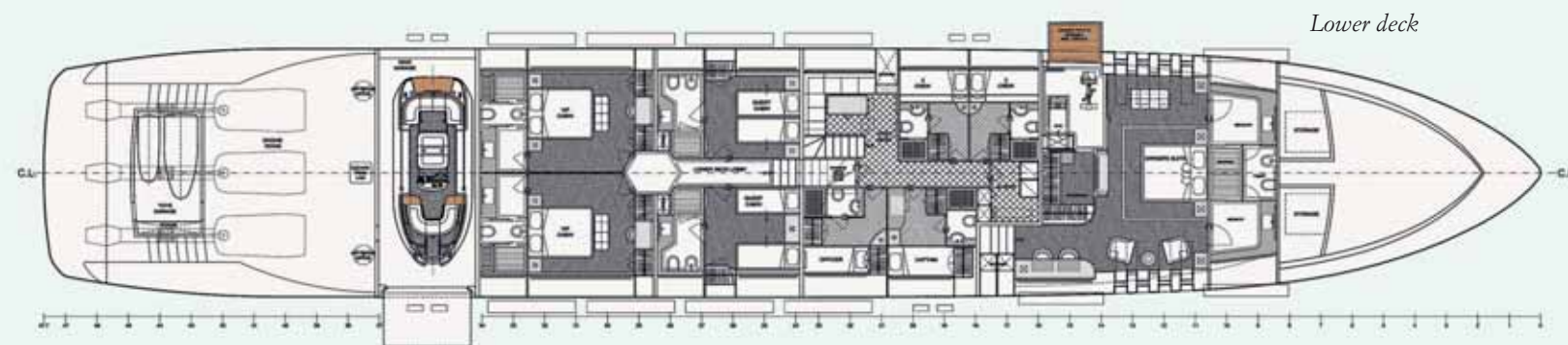
Fly deck



Wheelhouse



Main deck



Lower deck

## KETOS 48 SS



### MAIN TECHNICAL DATA

LOA	48,00 m / 157'6" ft
Beam overall	8,60 m / 28'3" ft
Draft	1,55 m / 5'1" ft
Max speed	30-36 knots
Accommodation	Guests 10 (1 Master - 2 Double - 2 Twin) Crew (1 Captain + 5)
Type	Waterjet Motor-Yacht
Material	Marine Grade Aluminium
Engine type	2 x MTU 16V 2000 M94 (2,600 HP) + 1 or 3 MTU 12V 4000 M93 (3,500 HP)
Naval architect	<b>Arrabito Naval Architects</b>
Exterior designer	<b>Team for Design by Enrico Gobbi</b>
Interior designer	<b>Team for Design by Enrico Gobbi</b>
Shipyard	<b>Flli Rossi S.r.l.</b> <a href="http://www.rossinavi.it">www.rossinavi.it</a> <a href="mailto:info@rossinavi.it">info@rossinavi.it</a>